

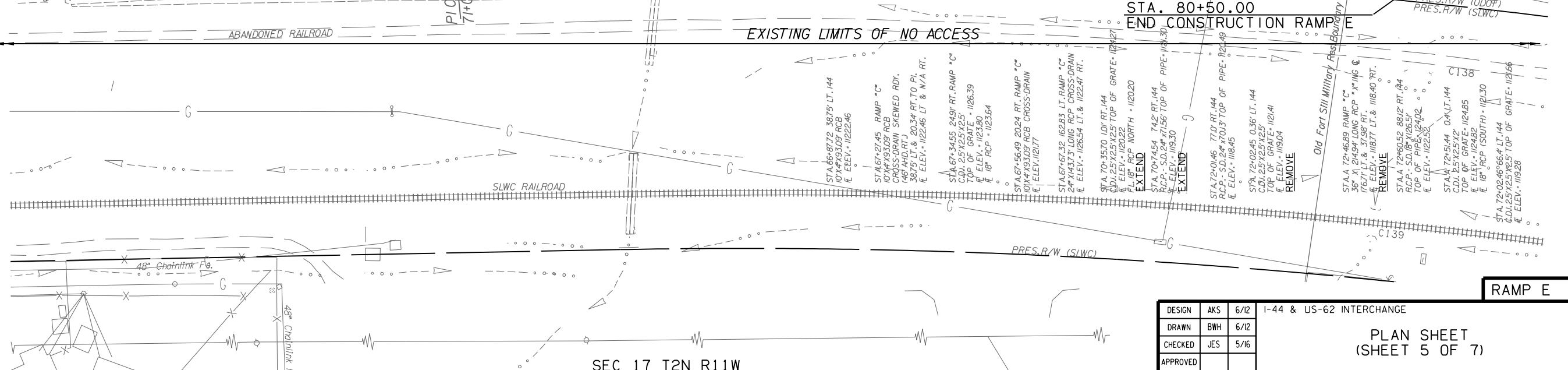
LEGEND

- PROPOSED PAVEMENT
- DRAINAGE STRUCTURE

SEE SHEET 45 FOR RAMP E PROFILE

SEE SHEETS 26 - 33 FOR GEOMETRIC DATA

SEE SHEETS 65 - 69 FOR PAVEMENT DETAILS



BM#43 CHISELED SQUARE
S.E. COR. S. HDWL
STA. 396+43, 27' RT.
EL. 1134.97

BM#44 2" ALUM. CAP
END OF OVERPASS I-44
EL. 1144.60

BM#45 TOP OF STEM. H.A.R.N. MON.
"TWO" & ODOT MON. NO. C-16-1081
"BM#3 SWO 3748(1) I-44
STA. 70+72, 192' LT.
EL. 1140.31

OKLAHOMA DEPARTMENT OF TRANSPORTATION					
FED. ROAD DIST. NO.	STATE	JOB PIECE NO.	FISCAL YEAR	SHEET NO.	TOTAL SHEETS
6	OKLA.	27050(04)	2017		

DESIGN	AKS	6/12	I-44 & US-62 INTERCHANGE		
DRAWN	BWH	6/12			
CHECKED	JES	5/16			
APPROVED					
SQUAD	GARVER		STATE JOB NO. 27050(04)	SHEET NO. 38	